

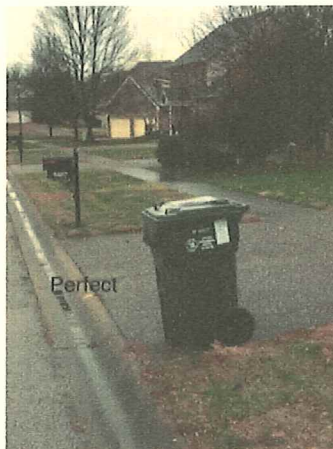
To: Windy Hill's Customers

Subject: Trash Can Placement

Eco Tech Environmental is in the process of converting routes to automated trucks in order to improve our customer service. Automated trucks provides a safer work environment and allows the driver to provide the best service possible.

With automated trucks, proper cart placement is needed in order to aid the driver and ensure that each customer is picked up in a safe and timely manner.

- Eco Tech Carts need to be at the curb the night before or by 6:00 A.M. the morning of their pickup to ensure proper collection.
- Eco Tech carts need to be facing the street with the lid opening facing the road and the wheels facing the house for proper/clean pickup.
- Multiple Eco Tech Carts need to be spaced 2 feet apart from each other to ensure the claw on the automated truck can grab the carts with ease and safety and to avoid making a mess.
- Eco Tech Carts and all trash cans need to have at the minimum, 3 feet of clearance from any object (Cars, Mailboxes, any other obstructions)
- If possible, all household trash needs to be contained in the Eco Tech Carts in bags. Overflowing Eco Tech Carts will contribute to unacceptable littering and is unsafe for the driver and their surroundings.
- Extra cans/trash needs to be at least 2 feet away from Eco Tech Carts and contained for proper disposal.



Perfect
Proper Placement



Too close



Improper Placement

Eco Tech Environmental appreciates all your help in regards to disposing of trash and recycling in a safe and effective manner.

If you have any have any questions or concerns, please call the office.

(502)-935-1130